

CONTEXT, PROGRAMS AND CURRENT PERFORMANCE ON KEY INDICATORS



EXCEPTIONAL LEARNING OPPORTUNITIES FOR ALL



CORE BELIEFS

- **We are all Partners in the Childs Education** (Teachers, Parents & the Community)
- **Everything we do is judged by the impact it has on Student Learning**
- Professional learning drives educational change
- The **Executive are Educational Leaders 1st** and faculty specialists 2nd!
- **Quality Teachers** produce the best student learning outcomes
- **Teachers and students are life-long learners**
 - **A mistake means that you are wiser person**
 - **How we learn today** rather than what we learn is more important for living tomorrow
 - **Every student has the potential to succeed** and achieve their personal best when engaged in our learning environment which is:
 - *socially inclusive*
 - *challenging*
 - *setting high expectations*
 - *and is rewarding success.*

WHY CHOOSE OUR COMPREHENSIVE HIGH SCHOOL?

- A maximised individual student achievement vision
- Greater focus on the core curriculum
- Truly comprehensive formal and social education in a fabulous physical environment
- Testing of year 7 and new students by STLA to establish learning styles and baseline data to build on
- Small class sizes – personalised learning, targeted teaching
- Teachers trained in ICT with a large number of IWB throughout the school to support web2 learners
- Exceptional teaching staff- motivated, experienced, inspired- **6 staff recognised at Regional and State level for Outstanding Achievement in last two years**
- **Exceptional student achievement:**
 - **Top ATAR 2010 95.5**

- **Regional Student Achievement Award 2010**
- **DesignTECH 2010 - 3000 projects submitted- Ewan Vaughan's project one of thirty selected for exhibition**
- **Extension opportunities for all:**
 - Ext 1 and 2 English
 - Ext 1 and 2 Mathematics - 5 out of 6 students gained band 6
 - Vocational Education and Training
- Outstanding and improving NAPLAN, SC and HSC results

CURRICULUM:

Moodle (learning management system) the school is moving towards implementing the use of Moodle to facilitating a continuum in curriculum delivery and learning for students through 21st century technology rich pedagogy.

Programs, Scope and Sequence and Assessment tasks will be posted on our school Moodle web site

Junior Curriculum – Years 7 – 10

The New South Wales Board of Studies sets the curriculum for all Department of Education schools.

At our school we maximize the opportunity for students to access the outcomes from the curriculum through the integration of technology and quality learning environments that are based on intellectual quality and significant learning experiences.

Key Learning Areas:

<ul style="list-style-type: none"> • English 	<ul style="list-style-type: none"> • Technology Mandatory (Materials, Graphics, Food, ICT)
<ul style="list-style-type: none"> • Mathematics 	<ul style="list-style-type: none"> • Languages (Italian)
<ul style="list-style-type: none"> • Science 	<ul style="list-style-type: none"> • Music & Visual Arts
<ul style="list-style-type: none"> • Australian History/Geography/ Civics 	<ul style="list-style-type: none"> • Personal Development, Health & Physical Education (PDHPE), Sport

School Certificate Studies

In Years 9 and 10 (Stage 5), students may choose three from a variety of electives, in addition to their core subjects of History, English, Geography, Maths, Science, Personal Development, Health and Physical Education and Sport.

Electives:

<ul style="list-style-type: none">• Commerce	<ul style="list-style-type: none">• Industrial Technology (Timber, Metal, Electronics)
<ul style="list-style-type: none">• Drama	<ul style="list-style-type: none">• Italian
<ul style="list-style-type: none">• Physical Activity and Sports Studies	<ul style="list-style-type: none">• Music
<ul style="list-style-type: none">• Photography and Digital Media	<ul style="list-style-type: none">• Food Technology
<ul style="list-style-type: none">• Graphics Technology (Technical Drawing)	<ul style="list-style-type: none">• Visual Arts

Senior Curriculum – Years 11 and 12

In Years 11 and 12 (Stage 6), a range of university entrance and vocational education packages can be chosen, including:

<ul style="list-style-type: none">• English (ESL, Fundamentals Standard, Advanced, Extension 1 and 2)	<ul style="list-style-type: none">• Personal Development, Health and Physical Education
<ul style="list-style-type: none">• Maths (Applied, General, 2U, Extension 1 and 2)	<ul style="list-style-type: none">• Hospitality VET
<ul style="list-style-type: none">• Physics, Chemistry, Biology	<ul style="list-style-type: none">• Construction VET
<ul style="list-style-type: none">• Design and Technology, Construction and Industrial Technology Timber	<ul style="list-style-type: none">• Business Services VET
<ul style="list-style-type: none">• Information Processes and Technology	<ul style="list-style-type: none">• Industrial Technology VET
<ul style="list-style-type: none">• Community and Family Studies• Modern History and History Extension	<ul style="list-style-type: none">• Work Studies

<ul style="list-style-type: none"> • Economics, Business Studies, Legal Studies and Society and Culture 	<ul style="list-style-type: none"> • TAFE Courses
<ul style="list-style-type: none"> • Music, Drama and Visual Arts 	<ul style="list-style-type: none"> • Distance Education and Open HS

SUPPORT for STUDENT LEARNING:

- Strong welfare structure (Transition Yr6-7, Year Advisers, Counsellor, Transition to Work, Careers, Girls Programs)
- Students supported and enriched by close ties to Sydney University and UNSW through Compass and ASPIRE programs
 - Homework centre utilises university students as tutors
 - Scholarships and Preferential access schemes
- An ability to target all learning needs and levels:
 - Support Unit
 - Individual tuition and Learning Support
 - Three School Learning Support Officers
 - Individual Learning Plans
- New School Leaving Age- proactive approach to Year 11/12 curriculum
- National Partnerships initiatives:
 - Accelerated Literacy
 - Technology as a Learning tool
 - Quality Teaching and learning through Professional learning and Programming
 - Student Engagement and Wellbeing
 - Parental and Community involvement
- ESL provision - an established Language Centre (room 300), well-resourced and supportive of all student learning. A specialist ESL teacher who works closely with these students with Vietnamese and Chinese Community Liaison Officers

CAREERS:

An innovative, high quality, integrated Careers Advice and Transition program

supporting students through Years 9-12. We have a full time Careers Advisor and a Transition Coordinator at our school who provide students with support, advice and opportunities to advance their skills for the workplace and ensure they apply for university, TAFE and work experience.

For junior students the careers program provides:	Senior students:
• Careers lessons	• Work experience/Work placement
• Work experience	• ATAR information
• Careers advice	• University admissions/ TAFE applications
• Job opportunities	• Careers days
• Interview practice	• Interview advice and job skills
• Workplace qualifications	• Apprenticeship /SBAT advice

GIFTED PROGRAM – LEARNING EXTENSION:

Gifted students are those whose potential is distinctly above average in one or more of the following areas of ability at school - intellectual, creative, social and physical. Our gifted and talented program provides these students with learning opportunities on top of the normal curriculum.

- Gifted and Talented program - 'blended learning' strategies
- Writers program – supervised by librarian(published author)
- Tournament of the Minds
- University Challenges – Maths, English, Science
- Public Speaking
- Drama – Talent Extravaganza
- Developing Music program - School Spectacular – individual and group performances 2008-2010
- Premiers Reading Challenge- largest number of high school entries in Sydney region
- RedRoom Poetry

STUDENT LEADERSHIP:

Students don't have to be school captains or house captains to be considered leaders. We encourage our students to be leaders in the classroom and playground,

through their support for other students, or their involvement in academic, sporting, cultural or community events and projects.

- Strong combined SRC program with Intensive English Centre SRC
- Marrickville Youth Council
- Young Leaders; YMCA Youth Parliament
- Regional and State SRC
- Prefects
- House Captains
- Annual charity focussed fund raising by students
- Duke of Edinburgh Award commencing 2012
- Best Buddies

SPORTS AND PHYSICAL ACTIVITIES:

Sport and physical activity is a valued and accepted part of our schools curriculum, contributing to the development of the whole child. It provides a vehicle for social, physical, emotional and moral learning and is an important expression of our culture.

The participation, enjoyment and skill development of our students is the cornerstone of the school sport/ physical activity program. All our students take part in this program.

There are also opportunities to represent our school at inter-school sports competitions and state knockouts. As a NSW public school we benefit from the opportunities for shared activities and competitions with other schools, coordinated by school sport associations.

- CHS KO's
- Mixture of integrated and grade sport
- PDH and PE programs
- Premiers Sporting Challenge
- Strong record of Regional and State level participation
- Extensive grounds, two soccer fields, gym and three basketball courts

Technology Supporting Learning

- School has a fibre optic backbone to all areas of the school running 1 Gbps speed
- Wireless across all areas of the school

- Laptops for all students years 9 to 12
- 5 computer rooms and one mac lab used for visual arts
- 2 video conferencing facilities
- 15 Interactive whiteboards more to be purchased 2012

The school used *SENTRAL* a web-based, modular School Administration, On-line Learning and Student Management software suite where student attendance is recorded period by period, welfare issues tracked, public and school calendars hosted, student timetables displayed and MOODLE learning Management System hosted.

POLICIES:

Attendance

Morning attendance rolls and period by period rolls are marked electronically and parents are notified by SMS when a child does not present at school.

Daily attendance monitoring

The Deputy Principal personally counsels student on a daily basis in relation to late arrival and early leavers. Parents are informed via SMS daily when their child is absent from school. A direct telephone line has been established for parents to contact the school attendance officer on any attendance issue.

Our school attendance rate

During semester one this year is **91%- above state average (2008 86.8%; 2009 88.1%; 2010 89.4%)**

Recognition

The highest expectations for performance and behaviour are acknowledged through a comprehensive system of merit awards and certificates.

These awards are given for performance and participation in all areas of school life. The consistent effort of Quiet Achievers who might not excel in any one field is also recognized through this system of rewards that culminates in the Quiet Achievers Day at the end of each year.

Anti-Bullying

We have a zero tolerance approach and a disciplinary response as required. However we take a proactive approach to preventing it through an effective 6 to 7 transition program and peer support programs such as Best Buddies.

Student Welfare Monitoring

Weekly meetings of year advisors, counsellor, girls supervisor, deputy principal and principal are held to discuss individual students behaviours and responses required. Small classes mean high levels of individual contacts with staff. Your child is known as an individual.

Smoking

Government Legislation states that smoking on school premises is illegal. The Marrickville High School Welfare Policy states the following consequences for smoking:

1st Warning the Student is counselled and warned of possible consequences. 2nd Warning parents are contacted by phone and/or mail and on the 3rd warning the student is suspension for continued disobedience and offered counselling. The student will need to show proof that they have taken steps to manage their problem before they will be re-admitted.

COMMUNICATING WITH PARENTS:

Parents and Citizens Association

Is a group of dedicated parents and interested members of the community, meeting on the third Tuesday of every month during the school term.

Events

Parents are invited to attend school special events, such as, Parent-Teacher evenings, meet the teacher, orientation events, and school spectacular evenings

Newsletter

Parents are kept informed about school life and events through monthly newsletters. Sent home to parents and posted on our school website.

School calendar

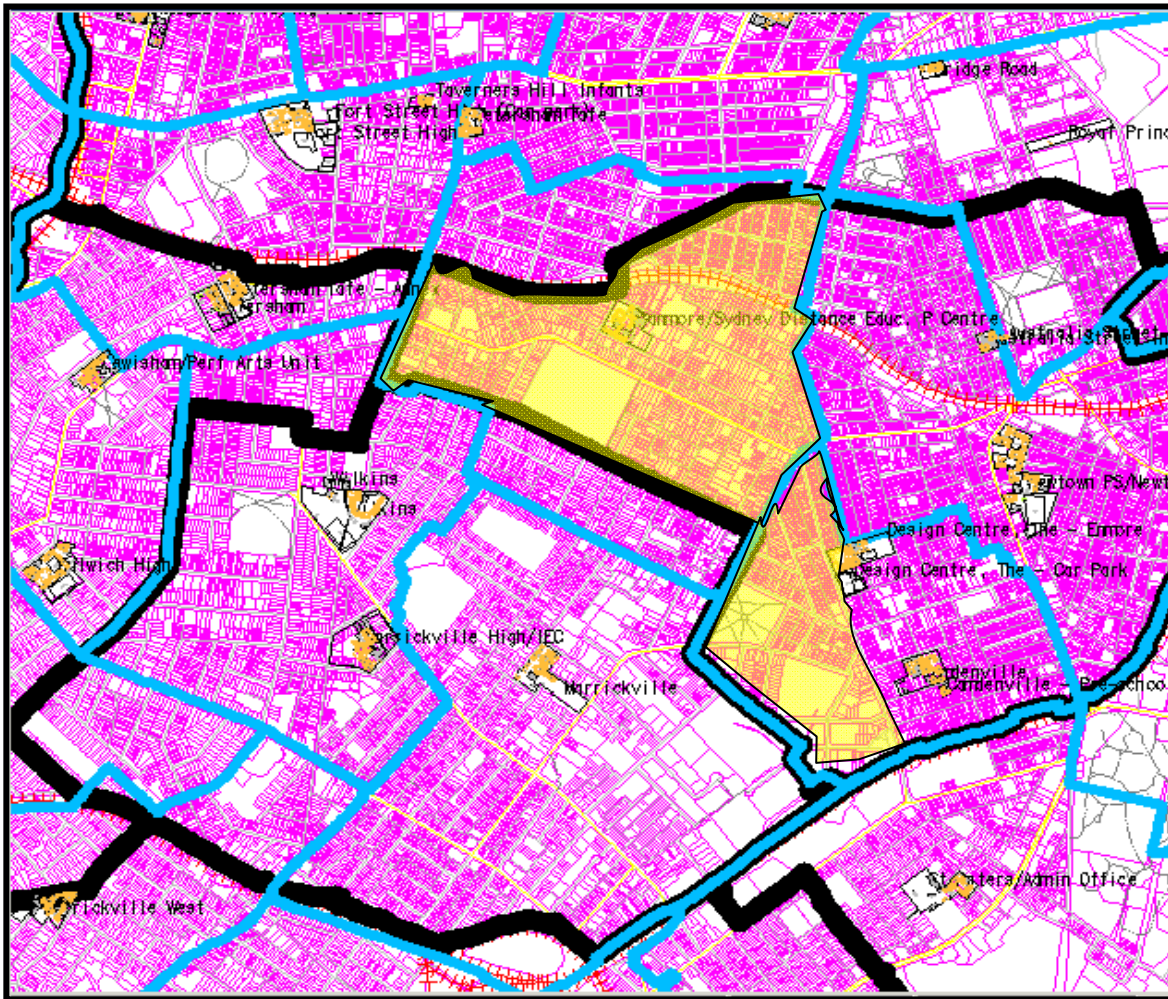
Parents are kept informed of important dates through the school calendar accessed on line through our school 'Sentral' web site.

Reports

Students receive a full half yearly and an end of year report and term 1 and term 3 progress tick reports. The Year Advisor and the Principal review all reports.



Tab A
**Proposed Reduction in the Designated Intake Area for
Newtown High School of Performing Arts**



Two areas are proposed to be transferred from the Newtown High School of Performing Arts designated local intake area to the Marrickville High School designated local intake .

Area 1

The area included residences zoned for Stanmore Public School bounded by Crystal Steet , Petersham to the west; Newington Road Stanmore to the south; Enmore Road Enmore, Liberty Street and Kingston Road Stanmore to the east; and, Salisbury Road Stanmore and the trainline to the north.

Area 2

The area included residences zoned for Camdenville Public School bounded by Enmore Road Enmore to the west; Edinborough Road Marrickville to the south; and, Edgeware Road to the east and north.

Tab B

Proposed Designated Intake Area for Marrickville High School

